



7th April 2025

Trial timed road closure on Boscathnoe Lane

Dear Resident,

We want to update you on the ongoing project between Mounts Bay Academy, the sustainable transport charity Sustrans, and Cornwall Council which is looking at ways to improve safety and reduce congestion around Mounts Bay Academy at the start and end of the school day.

As part of this project there will be a trial timed road closure along Boscathnoe Lane, from the junction with Madron Road (to the east) and Boscathnoe Way (to the west) - see map on reverse. This will start after the Easter holidays, beginning on **Tuesday 22nd April, it will operate between 8-9am and 2-3:30pm on school days only.**

During the trial, only authorised vehicles* will be able to use the road at these times. This will help reduce congestion, improve safety and allow school buses to enter and exit the school without traffic being backed up onto Madron Road.

**including school and public buses, blue badge holders and residents living within the closure area.*

The trial will also make the journey safer for those students who walk, wheel or cycle to school. **We are communicating with parents of Mounts Bay Academy students who currently drop off or pick up in a vehicle and asking them to consider parking further from the school and encouraging students to walk the final part.** This will help disperse traffic and alleviate traffic pressure on Madron Road.

In order to monitor the impact of the trial, traffic counts were recently carried out on surrounding roads and the same will happen during the trial. This will provide a picture of vehicle movements around the surrounding roads and any effect that these have locally.

Thanks for your support and should you have any further questions you can contact the team by emailing MountsBaySS@sustrans.org.uk

Kind regards,

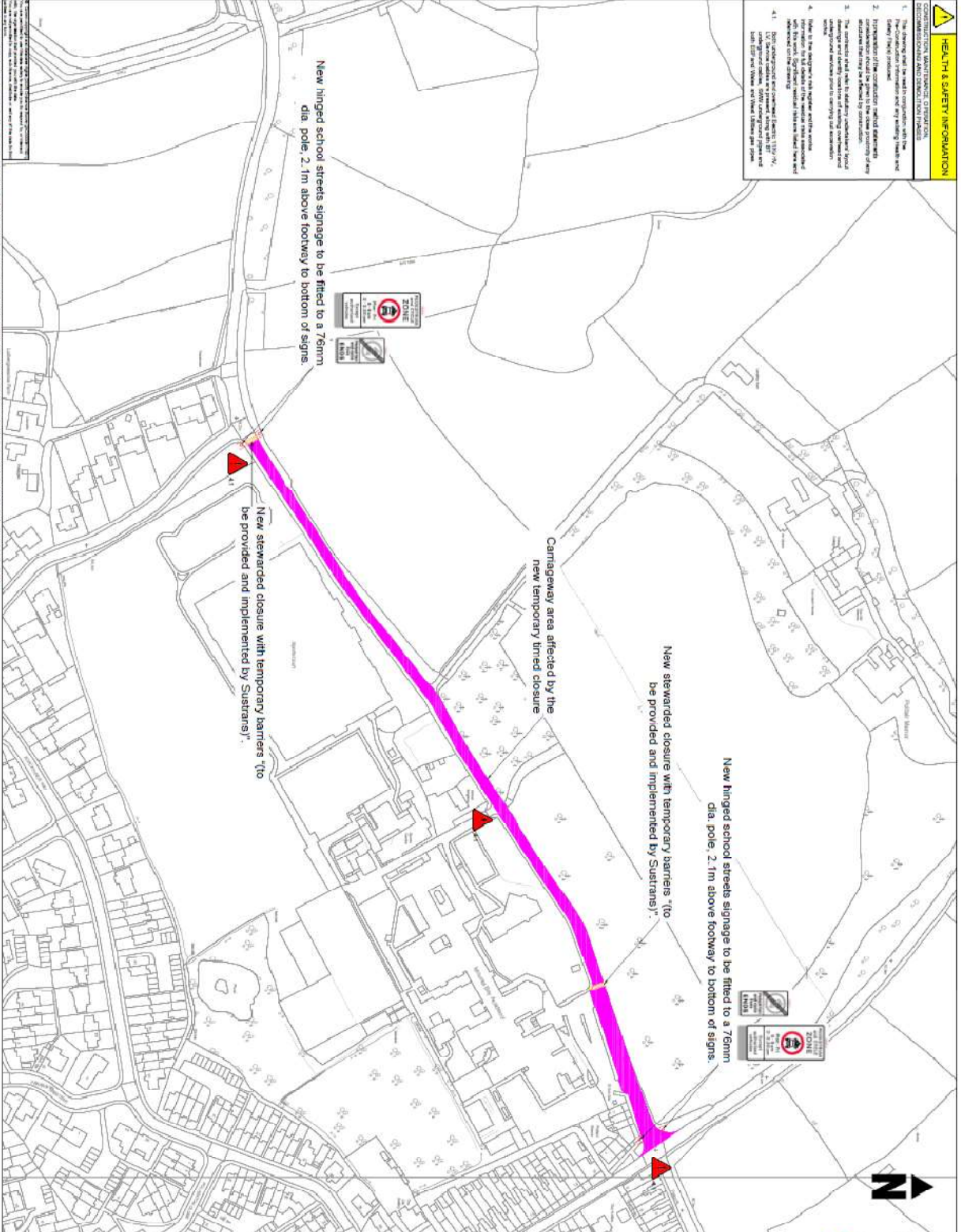
Sustrans Cornwall

Simeon Royle
Principal
Mounts Bay Academy

Neil Eddy
Director of Communities
Mounts Bay Academy

HEALTH & SAFETY INFORMATION

- CONSTRUCTION MANAGEMENT INFORMATION**
1. The contractor shall ensure that all workers are trained and competent in the use of any equipment used on the site.
 2. The contractor shall ensure that all workers are trained and competent in the use of any equipment used on the site.
 3. The contractor shall ensure that all workers are trained and competent in the use of any equipment used on the site.
 4. The contractor shall ensure that all workers are trained and competent in the use of any equipment used on the site.



© This drawing is Copyright. It should not be used or altered in any way without the written consent of the author. The author is not responsible for any errors or omissions in this drawing. The author is not responsible for any damage or loss of any kind resulting from the use of this drawing.

- LEGEND**
- Area affected by the new temporary closure
 - Area affected by the new temporary closure
 - Area affected by the new temporary closure

NO.	DESCRIPTION	DATE	BY	CHECKED BY

CORNWALL COUNCIL
one and all, one together

Council Formwork 2011 - 2012 supported by

MOTT MACDONALD

M M wsp

A DIVISION OF CONSERV A CORNWALL COUNCIL COMPANY

PROJECT TITLE: **Mounts Bay Access, Penrice Court Street**

DRAWING TITLE: **General Arrangement**

SCALE: **1:500 (B 4)**

DATE: **15/03/2011**

DESIGNED BY: **CONSERV**

CHECKED BY: **CONSERV**

DATE: **15/03/2011**

PROJECT NO: **11/0001**

DRAWING NO: **11/0001/01**

PROJECT LOCATION: **Mounts Bay Access, Penrice Court Street, Cornwall**